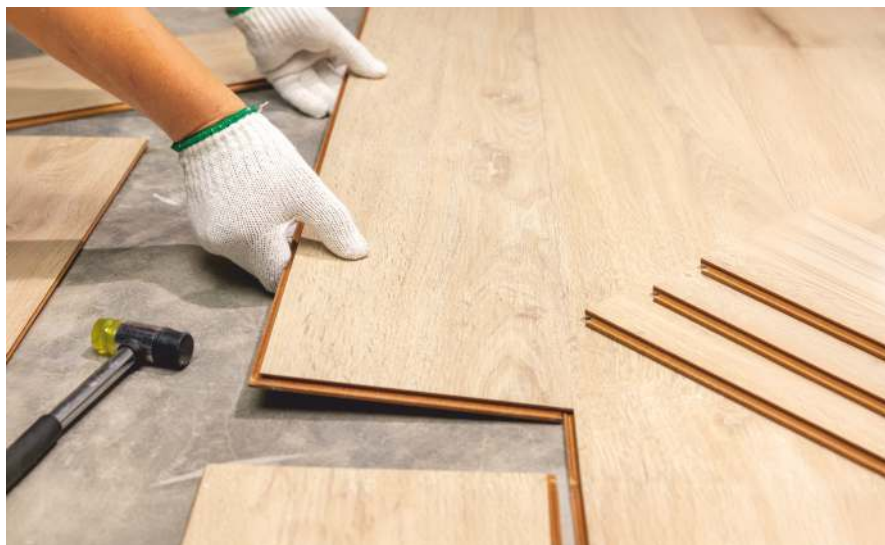




## INSTALLATION & CARE MANUAL



# ACTION TESA FLOORING

## Foreword

Thank you for putting your trust in Action TESA Laminate Flooring. Each Action TESA product has been crafted to give life to your dreams. It comes with the Action TESA promise of quality

Conforming to the highest international standards, Action TESA Laminate Flooring is designed specially to suit the Indian climatic conditions. Not only is it easy install but its also easy to maintain.

Please read the installation manual carefully to enjoy years of wooden flooring pleasure.

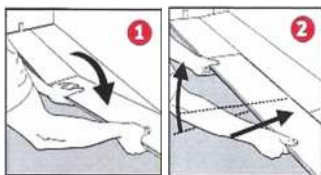


# Important Points to be considered before installation Action TESA Flooring

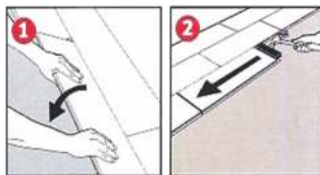
(A) Most of Action TESA's locking systems are optimized for the Angle-Angle installation method, as years of testing have shown this method to be superior to the Snap installation approach.

	Angle - Angle	Snap
<b>Installation</b> →	Easier & Faster to install No tools needed	Harder & slower to install Tools needed Risk of damaged surface & lock
<b>Joint Strength</b> →	Higher strength Retain strength 2 <sup>nd</sup> installation	Lower strength Only 50% strength on 2 <sup>nd</sup> installation
<b>Joint Opening</b> →	Lower at normal load (200 kg/m) High "Pullback" strength	Larger at normal load (200kg/m) Low "Pullback" strength
<b>Dismantle</b> →	Easier to dismantle	Harder to dismantle

Angle – Angle Installation Method



Snap Installation Method



# ACTION TESA FLOORING

## Installation of Laminated Flooring - 1

Laminate flooring is mostly laid in a floating manner. A floating floor refers to any floor where an additional underlay is introduced between the structural floor and the new overlay floor. This method allows the flooring to expand and contract with changes in temperature or atmospheric humidity. If the flooring is glued or fixed to the floor by nail, it cannot expand, which can lead to damage and instability over time.



To ensure a successful installation of laminate flooring, follow these steps carefully:

### 1. Prepare the Subfloor:

- Clean the floor thoroughly, removing any bumps and ensuring it is flat.

### 2. Moisture Protection:

- Lay down a 100 to 140-micron polythene sheet to protect against moisture seepage from below.

### 3. Underlayment:

- Install a silent underlay over the polythene sheet. This underlay, usually made of 2mm EPF Foam Sheet, helps reduce sound and compensates for minor floor irregularities.

### 4. Laying the Laminate Flooring:

- Place the laminate flooring planks or tiles on top of the silent underlay.
- Allow for natural expansion and contraction of the wood by leaving gaps (8mm to 15mm depending upon room size) between the flooring and any fixed objects or walls.
- If the room size exceeds 30 feet in length or width, it is advisable to divide the flooring into two parts and using a T-profile transition is a practical solution to accommodate the natural expansion and contraction of laminate flooring in larger spaces, helping to maintain the integrity and longevity of the floor installation.



# Important Points to be considered before installation Action TESA Flooring

## 2. Vapour Barrier:

- Always use a vapour barrier recommended by the manufacturer when installing laminate flooring over concrete. This barrier helps prevent moisture from reaching the laminate planks.
- Leave the recommended overlap at joints of the vapour barrier to ensure proper sealing and protection.

## 3. Underlay Specification:

- Use a standard foam underlay as a minimum specification when installing laminate flooring over concrete. Ensure edges are butted together without overlapping.
- The orientation of the underlay (parallel or perpendicular to the laminate planks) does not significantly impact performance but should be consistent for a uniform installation.

## 4. Direction of Installation:

- Preferably install laminate planks in the direction where natural light falls, typically at right angles to windows. This minimizes the visibility of joints and enhances the overall appearance.
- Alternatively, you can align the planks parallel to the longest wall for aesthetic or practical reasons, depending on personal preference and room layout.

## 5. Installation Technique:

- Always insert the tongue of each laminate board into the groove of the previously installed board. This ensures a secure fit and uniform appearance.
- Start by ensuring the first two rows of planks are straight. Use spacers between the planks and walls to maintain the required expansion gap, which accommodates natural expansion and contraction of the flooring.
- Adjust the spacers to compensate for any wall irregularities, knowing that these gaps will be concealed later by trim or skirting.

## 6. Cutting Laminate Planks:

- When cutting laminate flooring planks, cut with the decorative side ('face') up if using a hand saw or circular saw. This method prevents chipping of the laminate surface during cutting.
- If using a jigsaw with a standard blade, cut the laminate planks with the decorative side facing downwards to achieve clean cuts without damaging the visible surface.

Following these guidelines ensures that your laminate flooring installation over concrete is durable, aesthetically pleasing, and compliant with manufacturer recommendations, helping maintain the warranty validity.



# Important Points to be considered before installation Action TESA Flooring

## 5. Expansion Gaps:

- We should leave a gap varying between 8mm and 15mm for allowing free expansion and contraction. Please note no filler to be used in gap e.g. Silicon, cork etc.

## 6. Floating Floor Installation:

- The most common method for installing laminate floors is the Click System. This glue less Click System makes installation quicker and easier, ensuring instant results.

## 7. Acclimatization:

- Before installation, acclimatize the laminate flooring in the room where it will be installed for at least 48 hours. This helps the flooring adjust to the room's temperature and humidity, reducing the risk of expansion or contraction post-installation.

## 8. Follow Manufacturer's Instructions:

- Always adhere to the specific instructions provided by the manufacturer of your laminate flooring.
- Failure to follow these instructions could invalidate the warranty.

## 9. Preparation of Base Floor:

- Ensure the base floor is clean, flat, and free from any previous floor coverings.
- Address any dips or bumps according to the requirements of the underlying base material.

By following these steps meticulously and respecting the manufacturer's guidelines, you can achieve a durable and visually appealing laminate flooring installation.

## Installation of Action TESA Flooring

When installing laminate flooring over a concrete floor, it's crucial to follow these guidelines for a successful installation:

### 1. Moisture Content of Concrete:

- Ensure the concrete has a moisture content of less than 2.5% (CM method) before installing laminate flooring. Excessive moisture can lead to damage and instability in the flooring over time.
- If underfloor heating is involved, ensure the concrete moisture content is within the specified limit as recommended by the manufacturer.



# ACTION TESA FLOORING

## Care and Maintenance

Here are some care and maintenance tips for Action TESA Flooring:

**1. Immediate Spill Cleanup:**

- Wipe up accidental spills immediately using a dry cloth. This prevents moisture from seeping into the joints and potentially damaging the laminate flooring.

**2. Avoid Waxing or Varnishing:**

- Action TESA Flooring is designed and manufactured with a high-strength coated surface layer. Do not wax or varnish the flooring, as this can alter its appearance and compromise the protective coating.

**3. Dealing with Scratches:**

- If accidental scratches occur on the surface layer of the plank, use a product like colorfill to fill in the scratches. Follow the manufacturer's instructions for application to ensure proper repair.

**4. Cleaning Recommendations:**

- It is recommended to clean Action TESA Flooring with a vacuum cleaner regularly. Use the appropriate attachment to avoid scratching the surface. Alternatively, you can use a soft-bristled broom or dust mop to remove dust and debris.



**TRUE HDF INSIDE**



# ACTION TESA FLOORING

## Best Cleaning & Maintenance Practices

Maintaining laminate flooring is straightforward and requires minimal effort if done regularly. Here are some key tips for cleaning and caring for laminate flooring to keep it looking new:

### 1. Regular Cleaning:

- Use a soft-headed brush or a slightly damp mop for regular cleaning. This helps remove dust and dirt without damaging the laminate surface.
- After sweeping or mopping, use a vacuum cleaner around the edges of the room to pick up any remaining debris.

### 2. Special Cleaning Pads:

- Special cleaning pads designed for laminate flooring, similar to mops with replaceable wipes, are available. These pads attract dust and make cleaning laminate floors even easier.

### 3. Avoid Excess Moisture:

- When using a mop, ensure it is only slightly damp. Excessive moisture can cause the edges of laminate boards to expand and potentially lead to buckling of the floor.
- For stain removal, avoid using strong detergents. Instead, opt for a mild, non-abrasive cleaner applied sparingly.

### 4. Dealing with Stubborn Stains:

- For tougher stains, such as grease or pet stains, use a mop dampened with a mixture of water and vinegar, or ammonia diluted in water.
- Citrus-based cleaners are preferable over conventional soap-based cleaners as they are less likely to leave a residue.

### 5. Test New Products:

- Always test a new cleaning product on a small, inconspicuous area of laminate flooring first, such as under furniture or appliances, to ensure it does not damage or discolor the surface.

### 6. Avoid Abrasive Methods:

- Do not use steel wool, sandpaper, or scouring powder on the laminate surface, as these can scratch or dull the finish.
- Never attempt to sand, wax, or apply lacquer to laminate flooring, as it is designed with a protective coating that does not require additional treatments.

By following these simple care and cleaning practices, you can maintain the appearance and longevity of your laminate flooring effectively, ensuring it remains attractive and durable for many years.





# ACTION TESA FLOORING

## Best Cleaning & Maintenance Practices

To avoid any marks that could be left by furniture, use felt pads under the [furniture legs](#).

Try to always use a door [mat](#) at every exterior doorway. This helps trap any dirt etc., but also traps small stones and grit which may scratch the surface of your laminate flooring.

Always read the "care" instructions concerning cleaning laminate flooring, that come with your purchase, and adhere to them. The manufacturers care instructions would override any care instructions shown on this page.

By following the manufacturers instructions and these supplementary tips on cleaning [laminate](#) flooring, your floor should look as good as the day it was installed, for many years to come.

### Advice for Maintenance

STAIN CAUSED BY	SHOULD BE REMOVED WITH
Nail polish, shoe polish, varnish, oil, tar, asphalt make up and felt pen stains	White sprit
Tea, Milk, Wine, Beer, Fruit, berries and Soft drink spills	Soapy water solution
Scrapes or scuffs from show heels, Rubber marks, dirt from the street, pencil or crayon marks	A dust cloth
Blood and Urine stains.	A damp cloth/soapy water solution
Ink & lipstick	Methylated sprit

With the correct maintenance your Action TESA Flooring will give many years of pleasure and satisfaction.



# essence of action **TESA** laminate flooring

 <p>Enriched With <b>JOME</b> TECHNOLOGY</p>	 <p>Tropicalized Flooring Solution</p>	 <p>Indian Green Building Council MEMBER</p>	 <p>Balanced Construction</p>
 <p>Cigarette Burn Resistant</p>	 <p>Hygienic and Environment Friendly</p>	 <p>Fade Resistant</p>	 <p>Not Easily Flammable</p>
 <p>Suitable for Underfloor Heating</p>	 <p>Anti-Moisture Edge Protection</p>	 <p>Wear Resistant</p>	 <p>WAX COATING ON EDGES FOR MOISTURE PROTECTION</p>
 <p>Dimensionally Stable</p>	 <p>Zero Bubbles Finish</p>	 <p>Environment Friendly</p>	 <p>BORER RESISTANCE</p>
 <p>Low Formaldehyde Emission</p>	 <p>Glue Free Installation</p>	 <p>Impact Resistant</p>	 <p>Stain Resistant</p>



**TRUE HDF INSIDE**



**Special Note:** Product shades and pictures shown in the brochure may differ from the actual sample.  
So, please ask for an original plank sample for the actual color and design.





## **Balaji Action Buildwell Pvt. Ltd.**

**Regd. Office :** G-11, Udhog Nagar, Peeragarhi, New Rohtak Road,  
North West Delhi, Delhi - 110 041 **Ph.:** 011-41120000, 41120020

**Plant :** Plot No. C34, C34 (A) to (D) , C3, C6 (A) to (C), Eldeco Sidcul Industrial Park & Plot No.5,IIE,  
Sitarganj (US Nagar), Ultrakhand PIN - 262405, India

**CUSTOMER CARE SERVICE: 1800 309 07 07**

[customerservices@actiontesa.com](mailto:customerservices@actiontesa.com)

