



Get Ready
To Be Floored

INSTALLATION MANUAL

ACTION TESA FLOORING

Locking Profile & Advantages

Most of Action TESA's locking systems are optimized for Angle – Angle or Click installation Method. Years of testing have proven this method to be superior compared to Snap installation.

The Angle to Angle or Click system locking is the most effective & easy to Install method of laying Laminate Flooring. The Lock & Seal method gives a seamless flooring with ZERO GAP joints. This system is also known as the ISOMETRIC LOCKING SYSTEM. This simply means that the pressure on the tongue and groove joint is evenly distributed for increased durability.

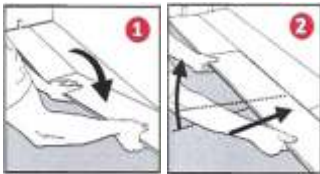


ACTION TESA FLOORING

Most of Action TESA's locking systems are optimised for Angle – Angle installation Method. Years of testing have proven this method to be superior compared to Snap installation.

	Angle - Angle	Snap
Installation	Easier & Faster to install No tools needed	Harder & slower to install Tools needed Risk of damaged surface & lock
Joint Strength	Higher strength Retain strength 2 nd installation	Lower strength Only 50% strength on 2 nd installation
Joint Opening	Lower at normal load (200 kg/m) High "Pullback" strength	Larger at normal load (200kg/m) Low "Pullback" strength
Dismantle	Easier to dismantle	Harder to dismantle

Angle – Angle Installation Method



Snap Installation Method



ACTION TESA FLOORING

The TESA Flooring Range

ESSENZA

The Essenza Range of Flooring is a specially designed flooring solution most versatile for domestic application & will standup to consistent daily foot traffic – Ideally for the Bed Room/Family Rooms/Drawing Rooms/Hotel Rooms. Its classified as AC3.



ENDURA

The Endura Range of Flooring is a perfect choice for busy boutiques/ cafes/shops/ showrooms/offices with medium to high Medium foot traffic . Its classified as AC4



EXOTICA

The Exotica Range of Flooring is an exquisitely crafted flooring solution & is the highest rated laminate flooring best suited for heavy foot traffic in commercial properties. Its classified as AC5

Action TESA HDF Flooring does not include the flooring range classified as AC1 & AC2



Action TESA Product Specification

Size & Thickness

- Available in thickness of 8mm & 12 mm
- Available in standard size of : 8ft" x 48" in plank form and other popular dimensions.
- Available in AC3/AC4/AC5
- Available in Shades
- Available in Textures



ACTION TESA FLOORING

Installation of Laminated Flooring - 1

Laminate flooring is mostly laid in a floating manner. The term floating floor means any floor where additional underlay is introduced between the structural floor and the new overlay floor. If it is glued or fixed to the floor, it cannot expand when exposed to change in temperature or to the atmospheric humidity.



ACTION TESA FLOORING

Installation of Laminated Flooring - 2

- At first floor is to be cleaned and dried removing any bumps and filling.
- Then polythene sheet of 140 micron is to be laid over floor to provide isolation of accidental moisture seeping through the floor.
- Next silent underlay is to be put over polythene sheet. The silent underlay helps in sound reduction caused by minor point to point thickness variation in floor. Silent underlay is generally 2mm thick polyethylene or PU foam.
- Then laminate flooring planks or tiles are to be laid on a silent underlay.
- The wood in the flooring will naturally contract and expand with the changing temperature. Allowance for Gaps for linear expansion is to be allowed & the flooring tiles are to be fitted with a small gap between it and any fixed objects. The gap will vary between 8 mm and 15 mm.
- The gap can later be fill with cork expansion strip and concealed beading.
- Laminated floating floors now available that simply snaps together, no glue required at all. Most laminate floors today fit together with a click system. Glue less system takes lesser time & effort with instant results.

Installation of Action TESA Flooring

- Installing laminate flooring correctly is of the utmost importance if you wish to have a long lasting floor, and a warranty that is valid. Always follow the manufacturer's instructions for installing laminate flooring that you have brought. Failure to do so could invalidate any warranty. Any instructions that you read here are to compliment the manufacturer's instructions, which take precedence over instructions here. Have a read through our [laminate flooring warranties](#) section for more details.

Preparation is the key

- All laminate flooring needs to acclimatize in the area where it is going to be installed for at least 48 hours, otherwise it will expand or contract after installation and the floor will be a mess. Place the unopened packs of laminate flooring into the middle of the room and leave for a minimum of 2 days.
- The base floor must be clean and flat before installing laminate flooring on it. Remove any previous floor coverings and make good any dips or bumps in a way that is applicable to the type of base floor that is present.



ACTION TESA FLOORING

Installation of Action TESA Flooring

If installing laminate flooring over a [concrete](#) floor then it is extremely important that the concrete is sufficiently dry, having moisture content less than 2.5% (CM method). If underfloor heating is involved then the moisture content should not exceed 1.5% (CM method).

Installation of Action TESA Flooring

Installing laminate flooring planks

- When installing laminate flooring over a concrete floor always use a vapour barrier as recommended by the manufacturer. Leave the recommended overlap at any joints. A vapour barrier is not required when installing laminate flooring on top of a wooden floor.
- The minimum specification for underlay is the standard foam underlay. When joints are required, edges should be butted together and not overlapped. It does not matter which way the underlay is laid, either the same way as the planks or at right angles to them. Have a look at more [laminate underlay](#).
- When installing laminate flooring it is better to lay the planks in the direction the light falls which would be at right angles to the [window](#). This makes the joints less visible. However, in some situations it is better to lay the planks in the same direction as the longest wall, in the end it comes down to personal choice.
- The correct way of installing laminate flooring is to lay the tongue of the board you are holding, into the groove of the board that has already been installed on the floor.
- Make sure the first two rows of planks are straight. Place spacers between the planks and the wall to give the required expansion gap. This will also even out any discrepancies in the wall, so in some places the gap may be larger than what is required for the expansion gap. This will be covered by the trim or skirting later.
- When cutting the laminate flooring planks, cut the plank "face up" if using a hand saw or circular saw. If you are using a jigsaw with a standard blade then cut the laminate flooring planks with the face downwards. This will avoid chipping of the laminate surface.

Angle – Angle or Click Installation Method Vs Snap Installation Method



ACTION TESA FLOORING

Care and Maintenance

- Wipe up accidental spills immediately, with dry cloth.
- Do not wax or varnish Action TESA Flooring .It has been designed and manufactured with a high strength coated surface layer.
- Should accidental scratches occur on the surface layer of the plank, apply color fill.
- It is recommended to clean Action TESA Flooring with vacuum cleaner.



TRUE HDF INSIDE



ACTION TESA FLOORING

Best Cleaning & Maintenance Practices

The after care that laminate flooring requires is very little and extremely simple. Cleaning laminate flooring, if carried out regularly, can keep your floor looking like new for many years to come.

A simply brush over with a soft headed brush or a very slightly damp mop, is all that is needed when cleaning laminate flooring. Follow this with the use of a vacuum cleaner around the edges of the room, and that is all that is generally required.

Special cleaning pads are available which look very much like a mop, and have replaceable wipes that wrap around the pad which attracts the dust, etc. and these make cleaning laminate flooring even easier.

Make sure that if you use a mop you do not soak the floor, as this could cause the edges of the laminate boards to start to expand and the whole floor may start to buckle. For stain removal, do not use a strong detergent. Use a mild, non-abrasive cleaner.

For large cleaning of stains, etc. on laminate flooring, use a [mop](#) with ammonia or a mixture of water and vinegar.

Where ever possible try to use citrus-based cleaners, and not the conventional soap-based cleaners.

Always test a new cleaning product on an area of [laminate flooring](#) that is out of sight, such as under the cooker or fridge for example.

When cleaning laminate flooring do not use steel wool, sand paper, or scouring powder on the laminate surface, and also never try to sand, wax, or apply lacquer to the laminate flooring.

ACTION TESA FLOORING

Foreword

Thank you for putting your trust in Action TESA Laminate Flooring. Each Action TESA product has been crafted to give life to your dreams. It comes with the Action promise of quality. Its vast range of colours, textures, styles enhances the beauty of your home or office. Action TESA Laminate Flooring is the perfect synthesis of beauty, functionality and technical excellence.

Conforming to the highest international standards, Action TESA Laminate Flooring is designed specially to suit the Indian climatic conditions. Not only is it easy to install thanks to its Isometric Locking System, but is also easy to maintain.

Please read the installation manual carefully to enjoy years of flooring pleasure.



ACTION TESA FLOORING

What is Laminate Flooring

Laminate Flooring is a Floating glue less click locked & sealed flooring similar to a jigsaw puzzle. In this method, the individual planks are locked on to each other by means of clicking together--but do not attach to the sub-floor on which it is being installed. Laminated Flooring is generally a HDF based tongue and groove interlocking flooring system that rest on top of the existing substrate ~ concrete slab, hard wood flooring or virtually any other flat hard surface that is suitable for the installation of Laminated Flooring.

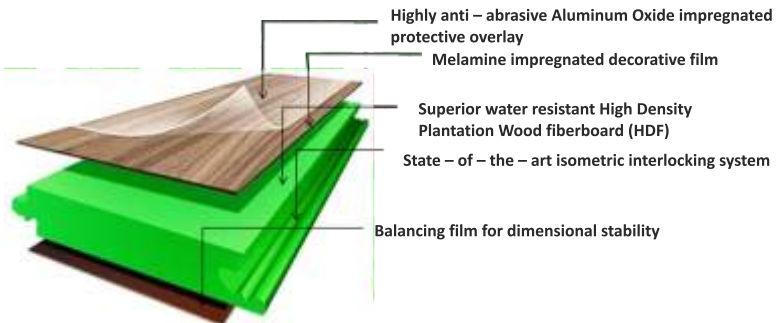
Laminate Flooring is popular due to its ease of installation & its simple maintenance, easy cleaning methods, resistance to stains & a very durable surface due to the “WEAR RESISTANT LAYER”.

The construction of Laminate Flooring has essentially four layers :

1. A wear resistant SURFACE LAYER – Consisting of a Aluminum Oxide coated tissue to make the flooring surface resistant to impact, scratches, burns & stains
2. A Printed Decorative paper layer which gives the decor wood grain or patterns.
3. Followed by the Core – Comprising of HDF 8mm – 12mm
4. The balancing paper that lends balance to the construction preventing warpage.

Action TESA Flooring range is a **Direct Pressure Laminated Process** whereby all the layers are fused directly to the core at the same time using heat and pressure.

Composition Layers Explained



ACTION TESA FLOORING




Parameters

- It is Direct Pressure Laminated (DPL) Plantation Wood) based HDF flooring. HDF flooring has a homogenous construction, having an uniform density of approximately 920 kg/m³ and uniform physical & mechanical properties across the dimensions of the board.
- In any flooring solution, the locking system is the heart & the single most important factor that determines the success of flooring solution both in terms of weight bearing capacity, Strength of the locking profile, longevity & finally the finish of the locked flooring. Action TESA Laminate Flooring uses the unique ISOMETRIC LOCKING SYSTEM. This simply means that the pressure on the tongue and groove joint is evenly distributed for increased durability.
- The quality of the locking mechanism is critical to the durability and look of your floating laminate floor. Such locking solution is also known as the glue less locking system & are also known as the CLICK SYSTEM or ANGLE TO ANGLE SYSTEM
- Action TESA Laminate Flooring is Indianized / Tropicalized by a surface sealant coat on the exposed HDF area on the locking edges ensuring that moisture seepage does not effect the joint and the flooring system.
- Action TESA Flooring is anti-bacterially treated for better hygiene.
- Action TESA HDF Based Laminate Flooring comes with the revolutionary DOME Technology & is dimensionally stable.
- Action TESA flooring has an Ultra Smooth surface resulting a perfectly smooth surface of the flooring
- Action TESA flooring is exclusively manufactured from Plantation Timber hence is environment friendly.



ACTION TESA FLOORING

Technical Ratings & Foot Fall Load Factors

Heads			
	Moderate	General	Heavy
Load Bearing Class	31	32	33
Abrasion Class	AC3	AC4	AC5
Combination of Load & Abrasion Class	 Moderate	 General	 Heavy

The various classes according to usage are as under :

- Class 31 : Moderate loads, ideal for hotels, meeting rooms etc.
- Class 32 : Normal Loads, ideal for offices, waiting rooms etc.
- Class 33 : Heavy loads, ideal for large offices, shops and public buildings.

Hardness & Ratings are explained below :

AC hardness ratings are a standardised measure adopted by the Association of the European producers of laminated flooring (EFPL).

The AC measure the combined abrasion resistance, impact resistance, resistance to staining, cigarette burns & thickness swelling along the edges.

- AC3 can be applied to more frequent traffic, e.g. bedroom, living room, dinning room & light commercial areas.
- AC4 can be installed in higher traffic commercial areas such as boutiques, busier offices & restaurants.
- AC5 is more durable and can withstand the traffic of heavier commercial areas such as department stores and public buildings.



ACTION TESA FLOORING

Best Cleaning & Maintenance Practices

To avoid any marks that could be left by furniture, use felt pads under the [furniture legs](#).

Try to always use a door [mat](#) at every exterior doorway. This helps trap any dirt etc., but also traps small stones and grit which may scratch the surface of your laminate flooring.

Always read the "care" instructions concerning cleaning laminate flooring, that come with your purchase, and adhere to them. The manufacturers care instructions would override any care instructions shown on this page.

By following the manufacturers instructions and these supplementary tips on cleaning [laminate](#) flooring, your floor should look as good as the day it was installed, for many years to come.

Advice for Maintenance

STAIN CAUSED BY	SHOULD BE REMOVED WITH
Nail polish, shoe polish, varnish, oil, tar, asphalt make up and felt pen strains	White sprit
Tea, Milk, Wine, Beer, Fruit, berries and Soft drink spills	Soapy water solution
Scrapes or scuffs from show heels, Rubber marks, dirt from the street, pencil or crayon marks	A dust cloth
Blood and Urine stains.	A damp cloth/soapy water solution
Ink & lipstick	Methylated sprit

With the correct maintenance your Action TESA Flooring will give many years of pleasure and satisfaction.



ACTION TESA FLOORING

The Essence of Action TESA Laminate Flooring

anti

bacterial treated

TRUE HDF INSIDE

Enriched With
JOME[®]
TECHNOLOGY


Tropicalized
Flooring Solution


Indian Green Building Council
MEMBER



BALANCED
CONSTRUCTION



DIMENSIONALLY
STABLE



ZERO BUBBLE
FINISH



ENVIRONMENT
FRIENDLY



Cigarette Burn
Resistant



Hygienic and
Environmentally
Friendly



Fade Resistant



Not Easily
Flammable



Low Formaldehyde
Emission



Glue Free
Installation



Impact Resistant



Stain Resistant



Suitable for
Underfloor Heating



Anti-moisture
Edge Protection



Wear Resistant


action
TESA[®]
HDF LAMINATE FLOORING





Balaji Action Buildwell Pvt. Ltd.

Regd. Office : G-11, Udhayog Nagar, Peeragarhi, New Rohtak Road,
North West Delhi, Delhi - 110 041 **Ph.:** 011-41120000, 41120020

Plant : Plot No. C34, C34 (A) to (D) , C3, C6 (A) to (C), Eldeco Sidcul Industrial Park & Plot No.5, IIE,
Sitarganj (US Nagar), Uttarakhand PIN - 262405, India

Customer Care Number - Toll Free - 1800 3090 707

customerservices@actiontesa.com

